

# It's The Animal in Me

Lyrics: Mack Gordon | Music: Harry Revel | 1943



e

(am) My heart (E7) beats with a (am) tom tom (E7) beat (am) (E7)  
(am) Throbbin' to the (E7) rhythm in a  
(am) savage (E7) jungle (am heat E7) (am)  
(dm) My emotions (G7) shout (em7) out  
(C) They want to be (am) freed  
(E7) I need love to (dm) keep a(E7)live  
(E7) Without (F7) it I (F#7) cannot sur(G7)vive



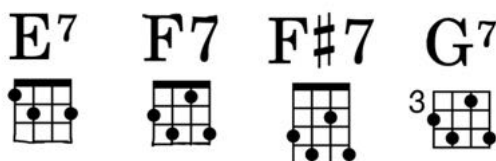
*chorus* (C) What makes something in me sing?  
(F7) Oh, I've gotta have my fling  
(G7) Let me free, woof, woof!  
It's the (C) animal in me (C-G7)  
(C) What makes something in me roar,  
(F7) Howl and growl? Oh, kiss me more!  
(G7) Can't you see? Woof, woof!  
It's the (C) animal in me (C)

(C7) Your caress possesses  
The (F) kick of a kangaroo  
If (D7) music soothes the savage beast  
(G7↓) Think of what a little bit of love can do

Like a (C) papa bear loves a mamma bear\*  
And he (F7) never leaves her flat  
Why do (G7) I like you like that? Woof, woof!  
It's the (C) animal in me (C-G7)

\* *zweiter Durchgang:*

Like a (C) Mickey Mouse loves a Minnie Mouse...



Leo Reisman & His Orchestra(voc. Frank Luther) 1934

[www.youtube.com/watch?v=0S01ebqN1NU](http://www.youtube.com/watch?v=0S01ebqN1NU)

Ethel Merman 1934 [www.youtube.com/watch?v=5dP3v0PK4OU](http://www.youtube.com/watch?v=5dP3v0PK4OU)

